

Submission NO: 115

The State Education and Training
Authority for Limerick and Clare



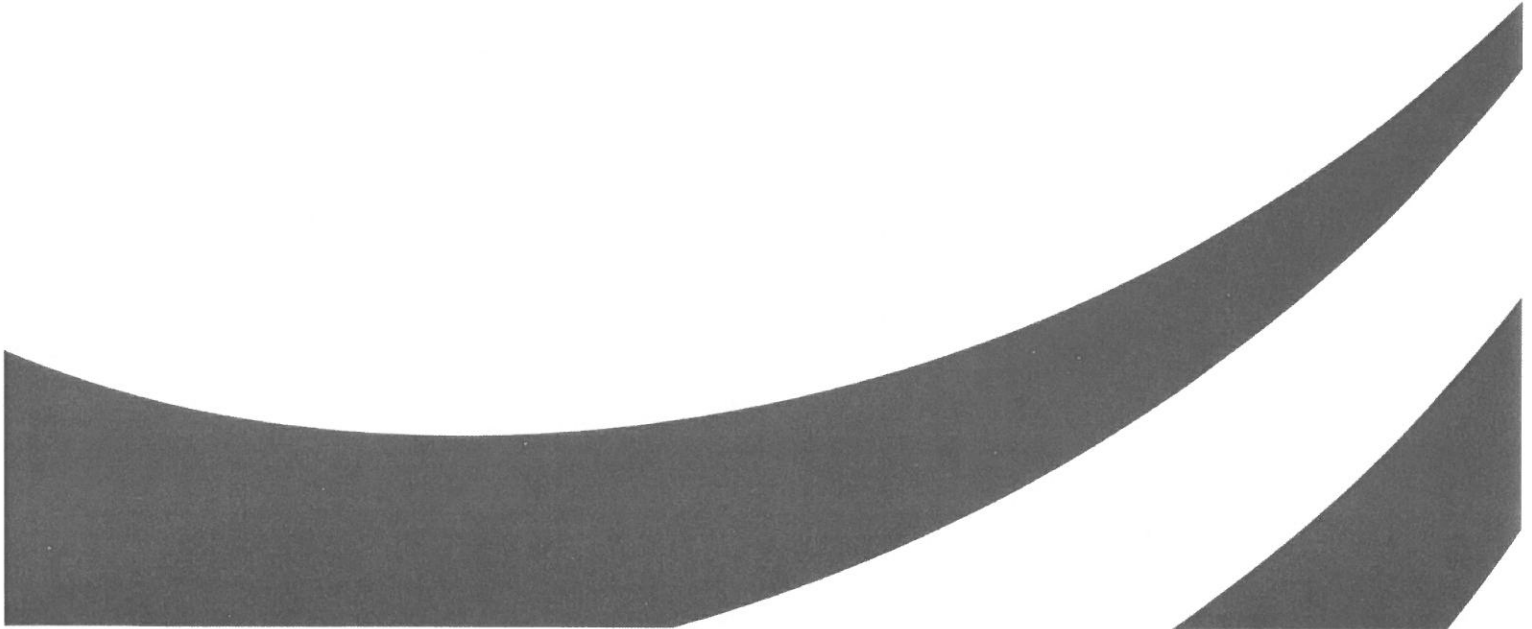
Bord Oideachais & Oiliúna
LUIMNIGH & AN CHLÁIR

LIMERICK & CLARE
Education & Training Board



Submission to Clare County Development Plan

November 2020



Introduction

Limerick and Clare Education and Training Board is the state education and training authority for the region with the statutory responsibility for the planning and provision of primary, post-primary and further education and training services for County Clare (as well as Limerick City and County); with a commitment to transforming the lives of the people in the communities we serve.

Limerick and Clare Education and Training Board has over 38,000 students and learners across its 25 schools and 30 centres. It is one of the largest employers in the region with 2,500 staff, an annual budget of €170 million, and a capital budget of over €100 million. The authority also has responsibility for youth services and provides supports to over 30,000 young people in the region.

Limerick and Clare Education and Training Board welcomes the opportunity to make a submission to the Clare County Development Plan and looks forward to exercising its functions under the Education and Training Boards Act to *plan, provide, coordinate and review the provision of education and training, including education and training for the purpose of employment, and services ancillary thereto in its functional area (Section 10 (c)).*

In this regard, Limerick and Clare Education and Training Board views the Clare County Development Plan as an opportunity to fulfil its functions and to provide for state-of-the-art education and training facilities across County Clare that will enhance the educational, social, cultural and economic life of the county. Education and Training will be pivotal in addressing the educational and socio-economic needs of the county and also in contributing to supporting areas of high unemployment and social disadvantage in the county.

Planning Primary and Post-Primary Facilities and Provision

In the context of planning for Primary and Post-Primary Facilities and Provision, the current context and demographic trends are important elements that will inform any future developments in the county.

Limerick and Clare Education and Training Board is committed to the provision of state-of-the-art facilities for the benefit of the community in the context of:

- Continuing strong demand for school places in County Clare
- Declining influence of Catholic ethos schools
- Increasing requirement for multi-denominational schools
- Need to consider amalgamations of existing schools
- Promotion of a 'Campus Concept' of educational provision, incorporating pre-school, primary, post-primary and Further Education and Training, including inter-agency occupancy - Occupational Therapists, Speech and Language, Psychological Support Teams etc.
- Out-of-school provision (evenings, weekends and holidays).

Limerick and Clare Education and Training Board has already undertaken significant development in the provision of school extensions at St Patrick's Comprehensive School, Shannon; St Anne's Community College, Killaloe; and Ennis Community College. Plans are also underway for the provision of extensions to Scariff Community College, Kildysart Community College and Gaelscoil Mhíchil Cíosóg. There are also new school developments planned for Mol an Óige Community National School, Raheen Wood Community National School and Ennistymon Community School.

Planning Further Education and Training Facilities and Provision

Limerick and Clare Education and Training Board, as the statutory provider of Education and Training in Clare, has responsibility for the overall efficient, effective and economical allocation of FET in the region; for example, this involves collaboration with other institutions in the county.

Limerick and Clare Education and Board currently plays a significant role in the educational, socio-economic and cultural life of the Clare community. The plan will offer an opportunity to grow and enhance these valuable supports and to sustain the viability of communities across County Clare.

Limerick and Clare Education and Training Board has undertaken significant developments in its Further Education and Training Campus at Clonroad Business Park, Ennis. The provision of these state-of-the-art facilities has enhanced the creation of a multi-disciplinary campus that caters for a wide range of programmes such as PLC, VTOS, Youthreach and Music Generation. It is planned to further expand facilities in the Ennis Campus that would provide a one-stop tertiary education facility in partnership with the local authority and third level institutions.

Limerick and Clare Education and Training Board also has a significant Further Education and Training facility in Shannon. There are plans to increase capacity and enhance facilities in Shannon through the development of a state-of-the-art campus incorporating Apprenticeship and Traineeship programmes targeted at the aerospace industry and other local and international enterprises.

The authority is also committed to further enhancement of its facilities in Miltown Malbay, Kilrush, Kilkee, Ennistymon and Scariff. Limerick and Clare Education and Training Board looks forward to working in partnership with Clare County Council in creating multi-use centres that will enhance the life of the communities in these areas.

Limerick and Clare Education and Training Board also has responsibility to work with local post-primary schools to promote Apprenticeships; for example, providing taster courses to TY students etc.

Planning Youth Facilities, Supports and Provision

As the statutory body with responsibility for the strategic development of youth work programmes and services in the region, Limerick and Clare Education and Training Board puts forward the following for inclusion in the Plan:

- That the Clare County Development Plan makes specific recognition of youth work as an important element of social infrastructure.
- All of the partners that support this infrastructure must be part of a process/structure that facilitates the strengthening and enhancement of the infrastructure. Young people must be part of this process/structure.
- That, for the most part, youth work is delivered by volunteers in communities, with support from youth work organisations.
- That the valuable work of volunteers and the organisations that support and enable them will be supported in imaginative and sustainable ways – this should include but not be limited to financial measures.
- In making provision for housing the citizens of County Clare, the plan must recognise that a key component of ensuring that communities are sustainable is that spaces are available for communal activity. Such spaces must be accessible by young people from the community and must be incorporated into new developments at the planning stage.
- The attractiveness of the county as a place to live is a balance between urban/rural and various other factors. The plan must commit to ensuring that developments are preceded by a meaningful consultative process rooted in sustainability, quality of life and the common good.



Bord Oideachais & Oiliúna
LUIMNIGH & AN CHLÁIR
LIMERICK & CLARE
Education & Training Board

The State Education and Training Authority for Limerick and Clare - an Overview

Sectoral Overview

- Education and Training Boards (ETBs) are 16 statutory authorities which have responsibility for education and training, youth work and a range of other statutory functions.
- ETBs manage and operate multi-faith community national schools, post-primary schools, further education colleges, and a range of adult and further education centres delivering education and training programmes.



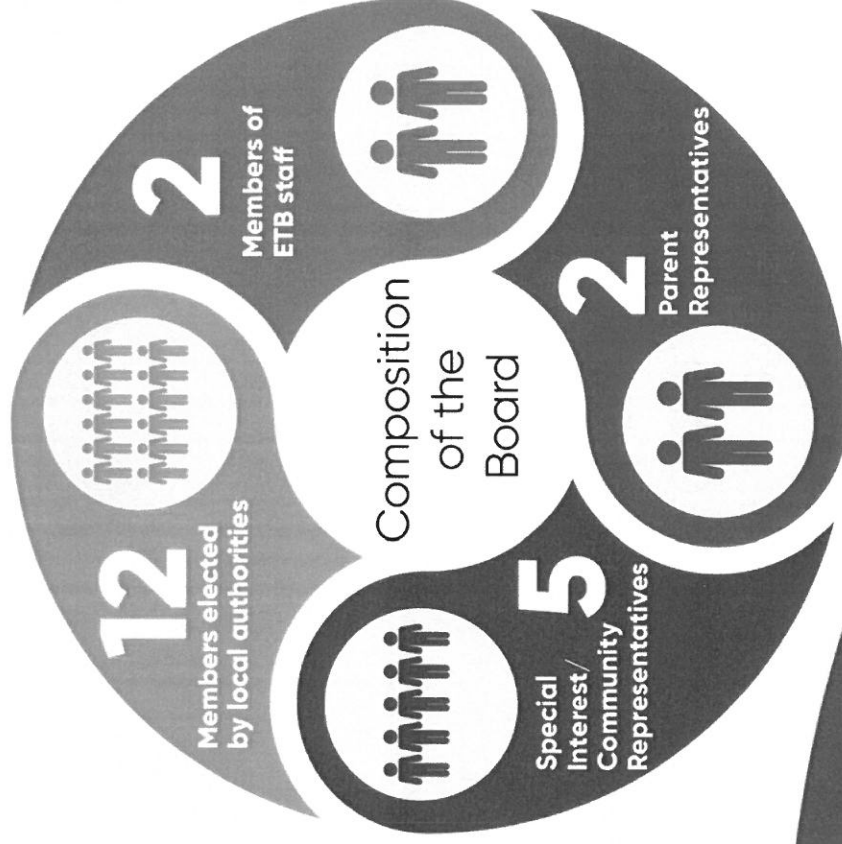
The authority:

- was created following the amalgamation of three Vocational Education Committees, which provided post-primary, adult and community education in Limerick City, County Limerick, County Clare since 1902.
- was established on 1st July 2013 and assumed responsibility from SOLAS of two former Training Centres in Raheen, Limerick and Shannon, Co. Clare on 1st July 2014.



In compliance with legislation, the authority's Board consists of 21 members in total:

- 12 members elected by local authorities
- 2 staff members of Limerick and Clare Education and Training Board
- 2 parent representatives
- 5 special interest/community representatives.



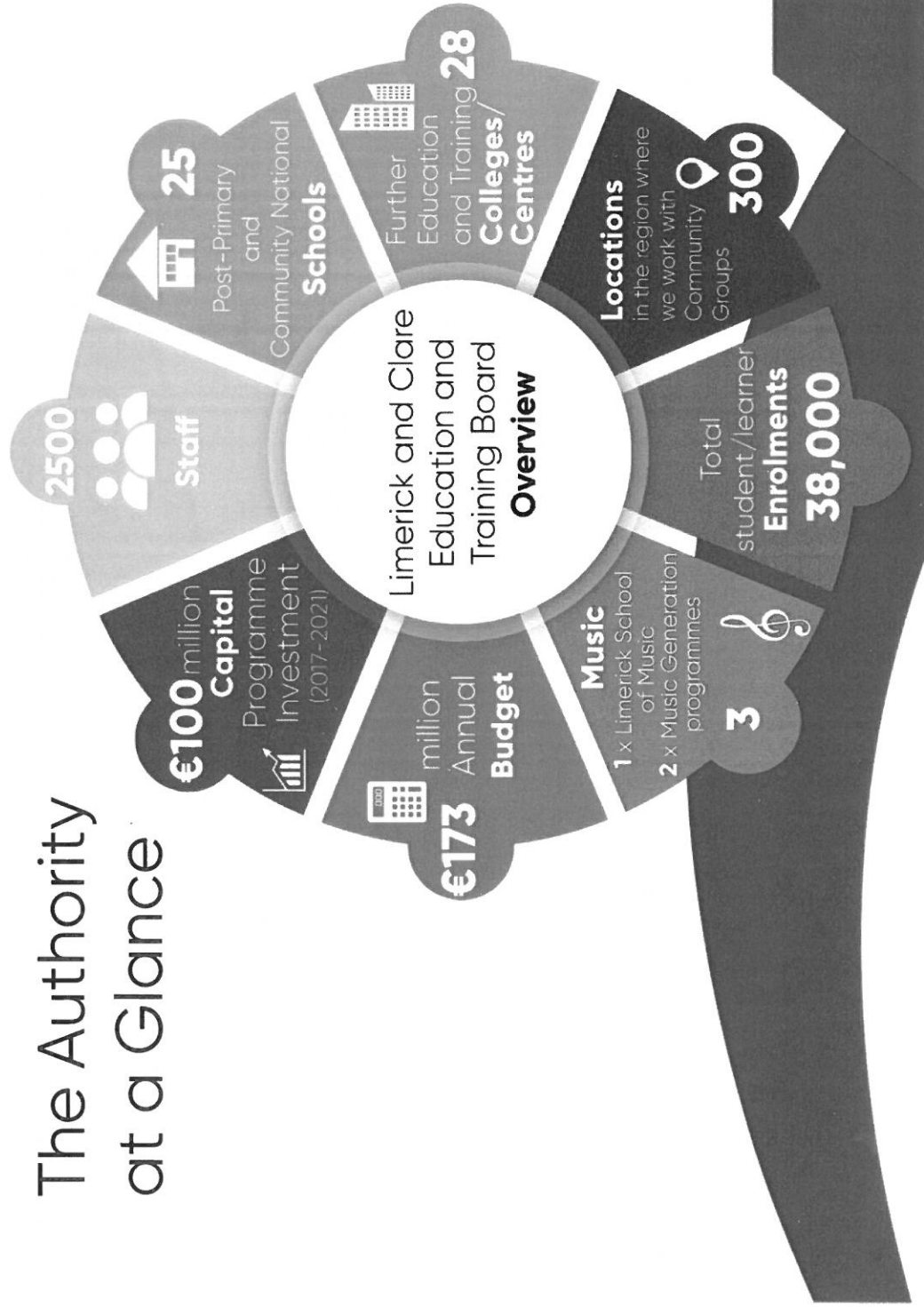
Vision

Vision Statement: Limerick and Clare Education and Training Board plays a leading role in the provision of high quality education and training in Limerick and Clare. The authority achieves this by transforming the lives of our students, our learners, our communities and the social and economic prosperity of the region through responding to student/learner, community and enterprise needs.



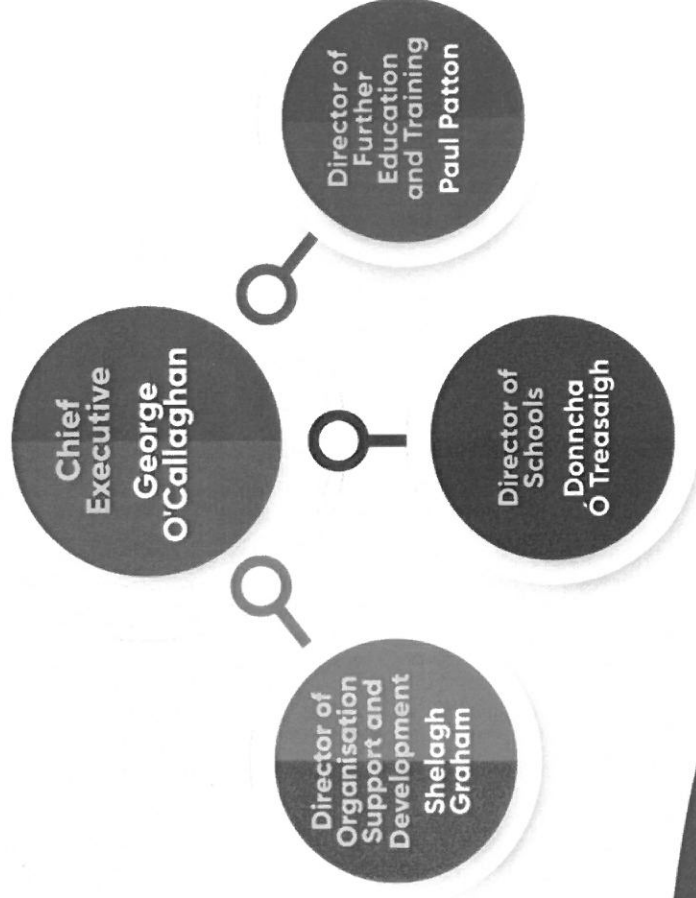
Boird Oideachais & Ollscoil
LIMERICK & CLARE
Education & Training Board

The Authority at a Glance



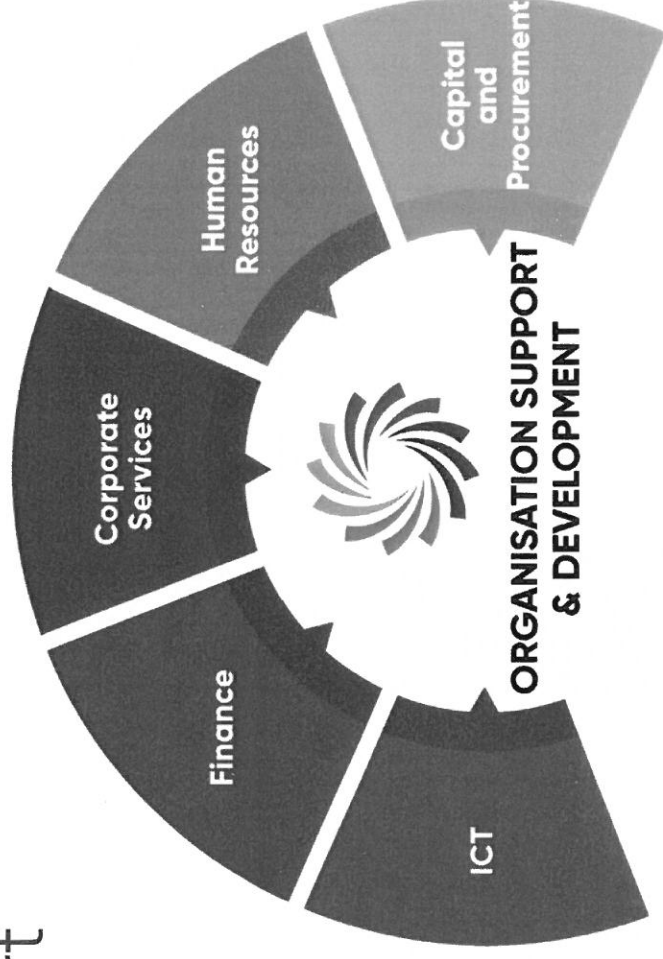
Organisational Structure

- The work of the authority is structured across three pillars.
- The Director of each pillar reports to the Chief Executive.



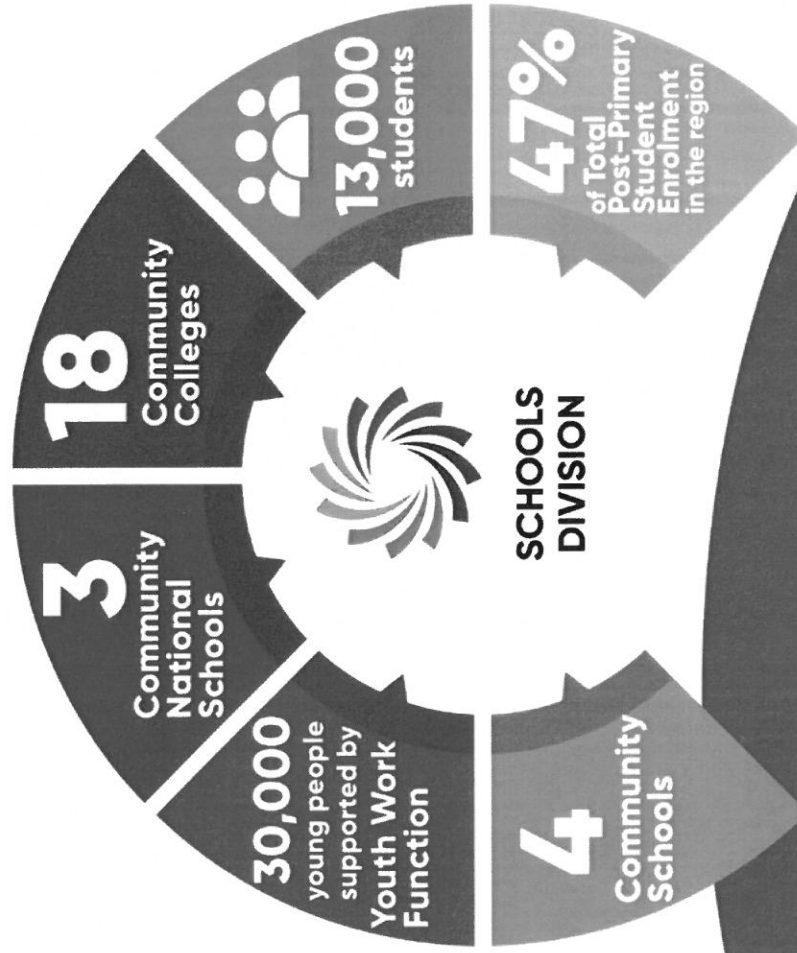
Organisation Support & Development

- This pillar has responsibility for five departments operating at two locations – Limerick (the authority's Head Office) and Ennis.



Bord Oideachais & Oiliúna
LIMERICK & AN CHLAIR
Education & Training Board

Schools Division



Further Education & Training Division

